

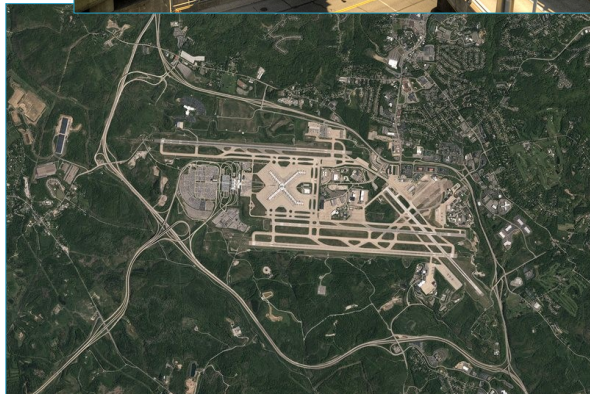
T ransportation

A ction

P lan



Construction
Legislative
Council



TRANSPORTATION SYSTEM IMPROVEMENTS TO BETTER SERVE THE PEOPLE AND BUSINESSES IN OUR REGION

Transportation is a major component in the development of our region and the creation of permanent jobs.

The Greater Pittsburgh Area has grown and now encompasses the entire southwestern region of the state.

Lack of public transportation, multimodal facilities and air traffic limit economic opportunities for the region.

A new approach must be taken to develop a transportation system that can serve people and businesses in our region.

CONTACTS

TAP Committee Members:

Margaret Talarico, PE (Chair)

Dan Laird

Brian Krul, PE, PTOE

David DiGioia, PE

Joe Kirk

Paul Messineo, PE

Lisle Williams, PE, PLS

For more information please visit www.clcpa.org and contact any member of the Executive Committee.

651 Holiday Drive Foster Plaza 5 Suite 300
Pittsburgh, Pa 15220

SUPPORTERS



Regional Beltway Transportation Enhancement Area

PURPOSE

Develop a signing program to clearly identify the existing interstate-based multi-county beltway in southwestern Pennsylvania.

NEEDS

Wikipedia notes “the function of the regional interstate network shown as a beltway around the Pittsburgh metropolitan area.” Unfortunately this is a little known fact.

The City of Pittsburgh is crippled with congestion of traffic that merely passes through the city.

VALUE

The identification of our regional beltway network has the opportunity to enhance Southwestern Pennsylvania in attracting investment and development.

Existing developments could identify their location as linked to a regional beltway system. This would enhance both marketing and the recruitment of a workforce.

The increase in functionality through planned upgrades would also improve development opportunities for areas in the region.

Identified regional beltway has the potential to divert traffic from congested highway networks in the region.

The Pittsburgh International Airport along the regional beltway further enhances the airport as a regional asset.

PROJECTS

Signage of the I-70, I-79, Beaver Valley Expressway (I-376) and The Pennsylvania Turnpike (I-76) as a regional beltway (see map)

Funding – This is a **LOW-COST** project that could be funded through existing resources of PennDOT and the Pennsylvania Turnpike Commission. Implementation would involve a memorandum of understanding between the organizations and could proceed without any additional legislative authorization. While these interstates represent a functioning highway network, improvements underway and planned through the [PENNDOT 12 Year Transportation Plan](#) would vastly enhance the functionality of the regional beltway.

West Busway and East Busway Extensions

PURPOSE

Develop a reliable direct transit connection between Downtown Pittsburgh and The Pittsburgh International Airport, as well as Downtown Pittsburgh and the East Suburbs.

NEEDS

The Pittsburgh International Airport connects us to the rest of the world, unfortunately no direct transit connection exists with the City of Pittsburgh.

The existing Parkway West is already over capacity. The Western Busway currently extends from Pittsburgh to Carnegie. The extension from Carnegie to the Airport is a necessity.

East Suburbs boasts hundreds of thousands of residents, large business districts and a convention center. Unfortunately no direct transit connection exists with the City of Pittsburgh **nor from Monroeville to the Greater Pittsburgh International Airport.**

The existing Parkway East is over capacity. The existing East Busway extends from Pittsburgh to Swissvale. **An extension from Swissvale to Monroeville is a necessity.**

VALUE

A busway connection between Downtown Pittsburgh and the Pittsburgh International Airport and a busway connection between Swissvale and Monroeville would help alleviate congestion, provide better access and encourage development along these corridors.

National site assessors will view a busway connection between Downtown Pittsburgh and Pittsburgh International Airport as a major positive making us more globally competitive.

Increased ridership is likely because travel time along these corridors will be reduced.

Extending the West Busway and East Busway will provide reliable and frequent service to jobs.

The Pittsburgh region has a good transit network. The Port Authority of Allegheny County is looking at several improvements including smart card technology, real-time vehicle tracking, and Bus Rapid Transit. **To encourage regional growth, these extensions are necessary.**

PROJECTS

Extending West Busway from Downtown Pittsburgh to Pittsburgh International Airport.

East Busway extension from Swissvale to the planned Mon Fayette Expressway interchange in East Pittsburgh. This connection (of the East Busway to the Mon Fayette Expressway) would result in a busway from Monroeville to downtown Pittsburgh.

Funding – This project would require a combination of FTA, state and local funds to construct. A partnership with PA Turnpike Commission could also result in a source of funding.

